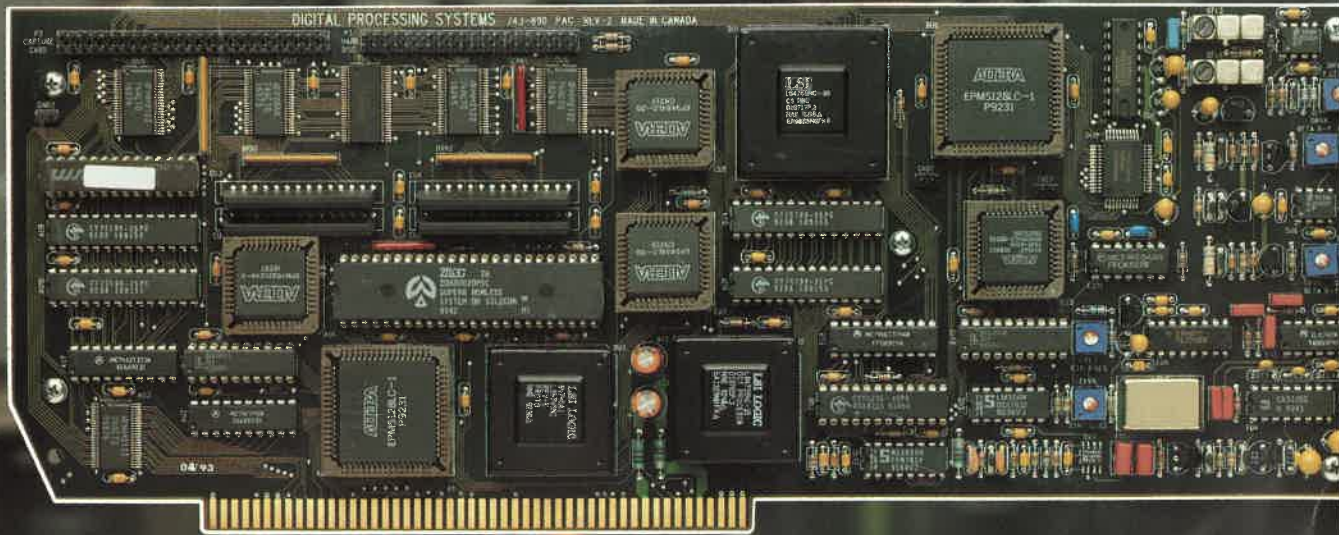


# DPS PERSONAL ANIMATION RECORDER™ DR-3150



**DIGITAL**  
PROCESSING SYSTEMS INC.

*If you want to look your best.*

# DPS PERSONAL ANIMATION RECORDER™ DR-3150

The DPS Personal Animation Recorder permits the recording and real time playback of computer animation sequences directly from a hard drive. The card plugs into an Amiga expansion slot and replaces both the record VCR and the single frame controller. A dedicated hard drive (not included) and component digital recording techniques are employed to enable the recording and real-time playback of full resolution animation sequences. Bad edits, missed frames, dropouts and other mechanical glitches common to traditional VCRs are a thing of the past with the DPS Personal Animation Recorder.

The DR-3150 fits a Zorro expansion slot in any Amiga® 2000, 3000 and 4000 series computer. It supports direct rendering of all common Amiga image formats including 24-bit IFF and Video Toaster® framestore files and is fully compatible with such Amiga animation packages as Real 3D™, MorphPlus™ and Imagine™. The DR-3150 can also be used to build sequences from pre-rendered AmigaDOS™ files.

When used in combination with a DPS AD-3000 Video Capture card, the DPS Personal Animation Recorder can perform real time video capture for rotoscoping, time lapse and other special effects. Maximum recording capacity varies, depending on image complexity and hard drive size, but three to five minutes is typical for a 500 MB hard drive.

## SPECIFICATIONS

### OUTPUT SIGNALS:

Composite PAL.....	1 V p-p 75 Ohm
S-Video (4-Pin):	
Y.....	1 V p-p 75 Ohm
C.....	300 mV p-p Burst 75 Ohm
Component Betacam/MII (BNCs):	
Y.....	1 V p-p 75 Ohm
R-Y, B-Y (Pr, Pb).....	0.7 V p-p 75 Ohm

### GENLOCK INPUT:

Composite PAL.....	1 V p-p 75 Ohms
--------------------	-----------------

### DIGITAL I/O:

DPS CVE™ Bus.....	For Optional AD-3000 RT Video Capture Card
-------------------	--

### VIDEO PERFORMANCE:

Frequency Response.....	>5.5 MHz (-3 dB)
K-Factor (2-T).....	<1%
Differential Phase.....	<1°
Differential Gain.....	<1%
Signal/Noise.....	>60 dB (Luma Weighted)

### POWER CONSUMPTION:

+5V.....	1.4 Amps
+12V.....	150 mA
-12V.....	60 mA
Total.....	9.5 Watts

### STORAGE CAPACITY:

Stills (Typical).....	5,000 - 10,000 Frames
Animation (Typical).....	3 - 5 Minutes

HARD DRIVE I/F..... Internal Standard AT type IDE 40-wire interface

Notes: All levels correspond to 100% Color Bar Signal. Betacam/MII outputs share BNCs, format selected via software. Listed capacities based on 500 MByte disk drive. Actual capacity will vary depending on source image complexity.

### ANALOG VIDEO INPUTS:

(Via Optional AD-3000 Real Time Capture Card )

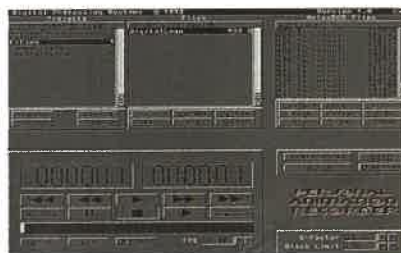
Composite PAL.....	1 V p-p 75 Ohm
S-Video (4-Pin):	
Y.....	1 V p-p 75 Ohm
C.....	300 mV p-p Burst 75 Ohm
Component Betacam/MII (BNCs):	
Y.....	1 V p-p 75 Ohm
R-Y, B-Y (Pr, Pb).....	0.7 V p-p 75 Ohm

Note: All levels are referenced to 100% Color Bars.



### FEATURES:

- S-Video, PAL and CAV (Betacam®/MII®) Video Outputs
- Genlock Input
- Variable Speed Playback
- >5.5MHz Video Bandwidth
- >60 dB S/N
- Random Access Still Frame Retrieval
- Archive Using Standard Tape Backup Software
- Produce Unlimited First Generation Tape Dubs



Hard Drive not included. Please contact DPS for a current list of compatible disk drives.



**DIGITAL**  
PROCESSING SYSTEMS INC.

### HEADQUARTERS

55 Nugget Avenue, Unit 10  
Scarborough, Ontario M1S 3L1  
Canada  
(416) 754-8090  
Fax: (416) 754-7046

### USA

11 Spiral Drive  
Florence, KY 41042  
(606) 371-5533  
Fax: (606) 371-3729

### EUROPE

Riverside Business Park, Unit 2  
Dogflud Way, Farnham  
Surrey, GU9 7SS U.K.  
(0252) 718300  
Fax: (0252) 718400

DPS Personal Animation Recorder™ and CVE™ are trademarks of Digital Processing Systems, Inc. DPS Personal TBC® is a registered trademark of Digital Processing Systems, Inc. AmigaDOS™ is a trademark and Amiga® is a registered trademark of Commodore-Amiga, Inc. Lightwave 3-D™ is a trademark and Video Toaster® is a registered trademark of NewTek Incorporated. MorphPlus™ is a trademark of ASDG, Inc. Real 3D is a trademark of RealSoft International. Imagine™ is a trademark of Impulse, Inc. IBM® and PC® are registered trademarks of IBM Corp. Betacam® is a registered trademark of Sony Corp. MII® is a registered trademark of Panasonic Broadcast.